

Gurtex waterproofing and anti-corrosion barriers were developed in the USA from a unique formulation utilizing IPN and nano-technologies.

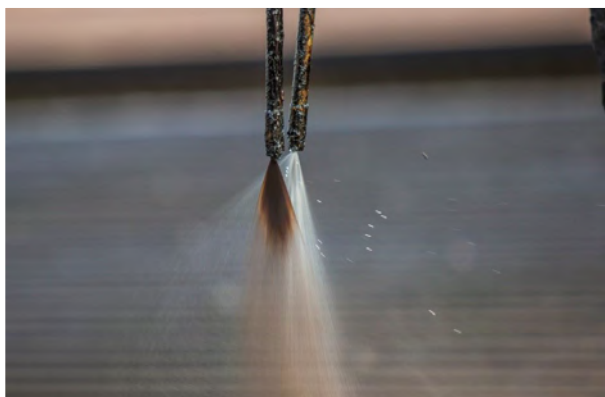
The micro-compounds of synthetic rubber latex and bitumen form a tough adhesion layer, permeating and bonding with the substrate surface. This effectively fills surface pores and imperfections.

After curing, Gurtex forms a seamless, highly-elastic, water-resistant membrane.



GurtexTM

WATERPROOF ANTI-CORROSION BARRIERS





TOUGH & LONG LASTING

Gurtex substantially extends the lifespan of corrugated or tiled roofs and concrete structures. The product is neither self-flammable nor does it burn.



FAST & EASY TO APPLY

The product can be applied with minimal preparation to substrate.



SAFE & ECO-FRIENDLY

The water-based latex barrier is odourless and does not leach harmful chemicals or gases into the soil, water or air.

PROTECT IT

Gurtex protects by waterproofing and smoothing surfaces while sealing against corrosion. Gurtex can stop leaks caused by material deformation, heat expansion, cracking, piercing (due to the installation of roof fixtures), loose joint mountings and rust.

Gurtex Products is suited to all types of buildings and structures and can be applied to a wide variety of materials including metals, galvanized materials, PVC piping, fibreglass, cement, tiles and paint. Use on:

- Corrugated or tiles roofs
- Horizontal concrete rooftop decks and patios
- Concrete civil infrastructure
- Cellar floors and walls
- Artificial pools and fish ponds, pipelines, tunnels, culverts and dams.

GURTEX SG - 338

Spray-on waterproofing barrier

Gurtex SG-338 is applied as a spray that combines two chemical compounds using a twin-nozzle spray machine. It provides full waterproofing and anti-corrosion coverage to surfaces that have irregular shapes, as well as surfaces with existing or new cracks. The product does not deteriorate in full sun or under water and will not peel.



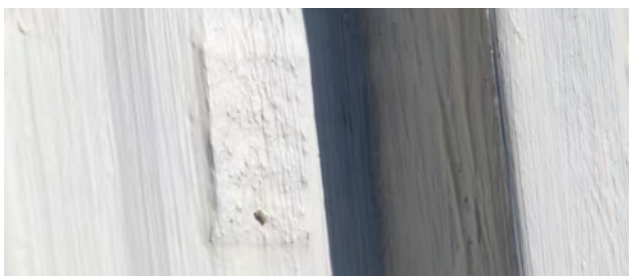
GURTEX SG - 378

Brush-on waterproofing barrier

Gurtex SG-378 is a white latex membrane applied by paintbrush or roller for waterproofing and anti-corrosion protection.

It has superb adhesion and can be applied on a wide range of building materials.

The surface cures in 40 minutes and a water-contain test can be done 6 hours after application.



GURTEX SG - 368

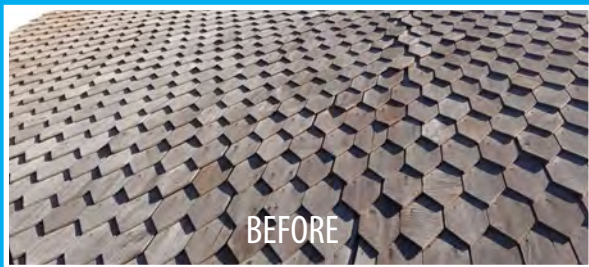
Brush-on interior & exterior waterproofing barrier

Gurtex SG-368 is a single component high viscosity paste for application with a paintbrush or hand spray.

It gives extra protection around water inlets and outlets, guttering, overlapping edges, fasteners, taps and other detailed features of built structures.

Gurtex SG-368 is an ideal waterproofing solution for cellars, basements and parapet walls. Because it does not leach chemicals into the water, Gurtex SG368 can be used on underground or above-ground water distribution and storage structures like pipelines, tunnels, tanks artificial dams, ponds and pools.





RESTORE IT

Gurtex anti-corrosion waterproofing range is imported and distributed by approved agents in Africa, Asia-Pacific, Australia, Mauritius and the Caribbean Islands.



www.gurtexwaterproofing.com
sales@gurtexwaterproofing.com

